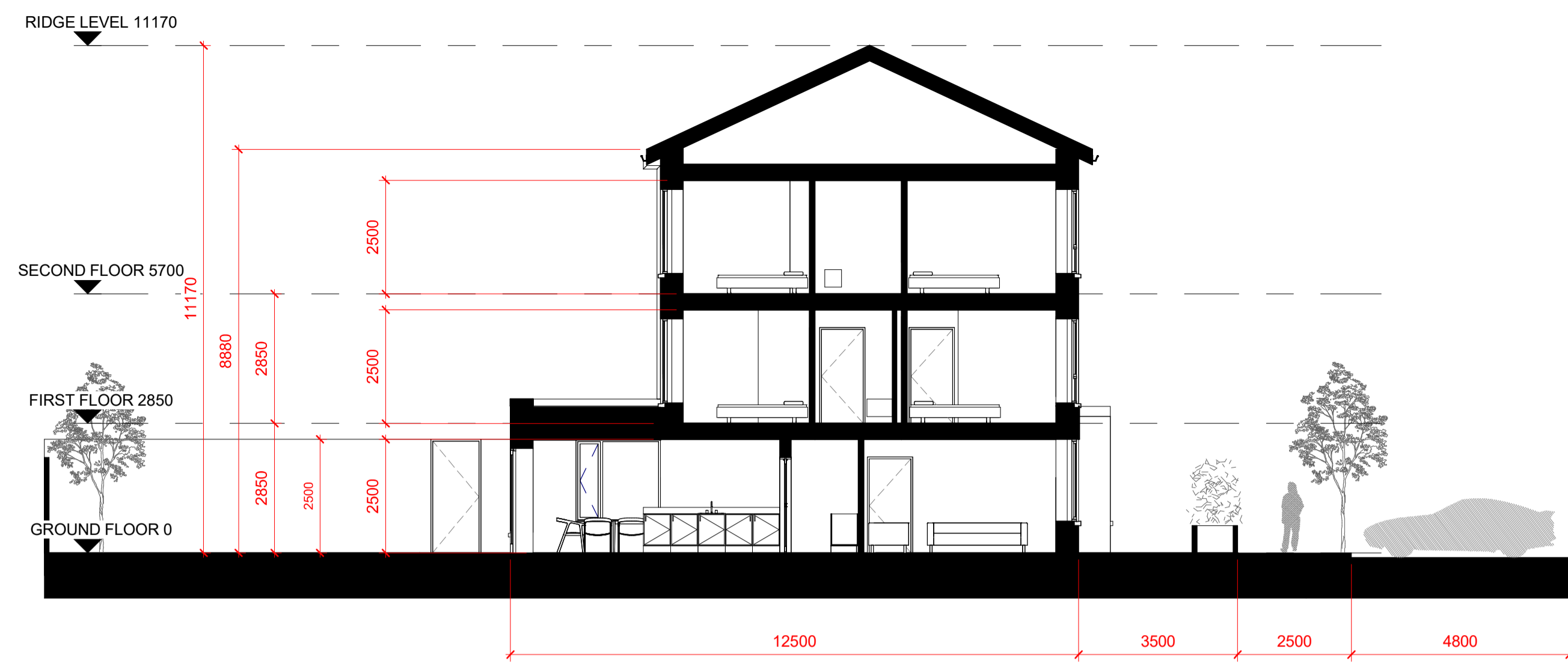


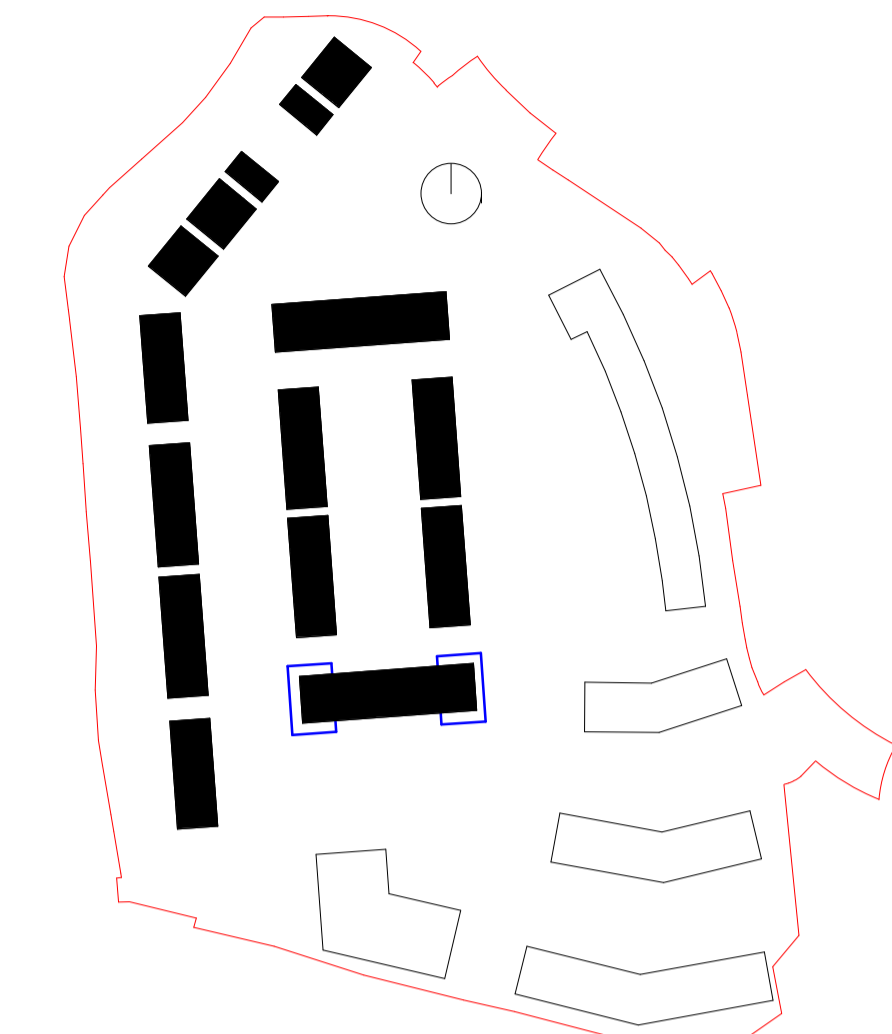
ALL DIMENSIONS TO BE CHECKED ON SITE
NO DIMENSIONS TO BE SCALED FROM THIS DRAWING
DRAWING IS TO BE READ IN CONJUNCTION WITH RELEVANT CONSULTANTS DRAWINGS



4 SECTION
1:100



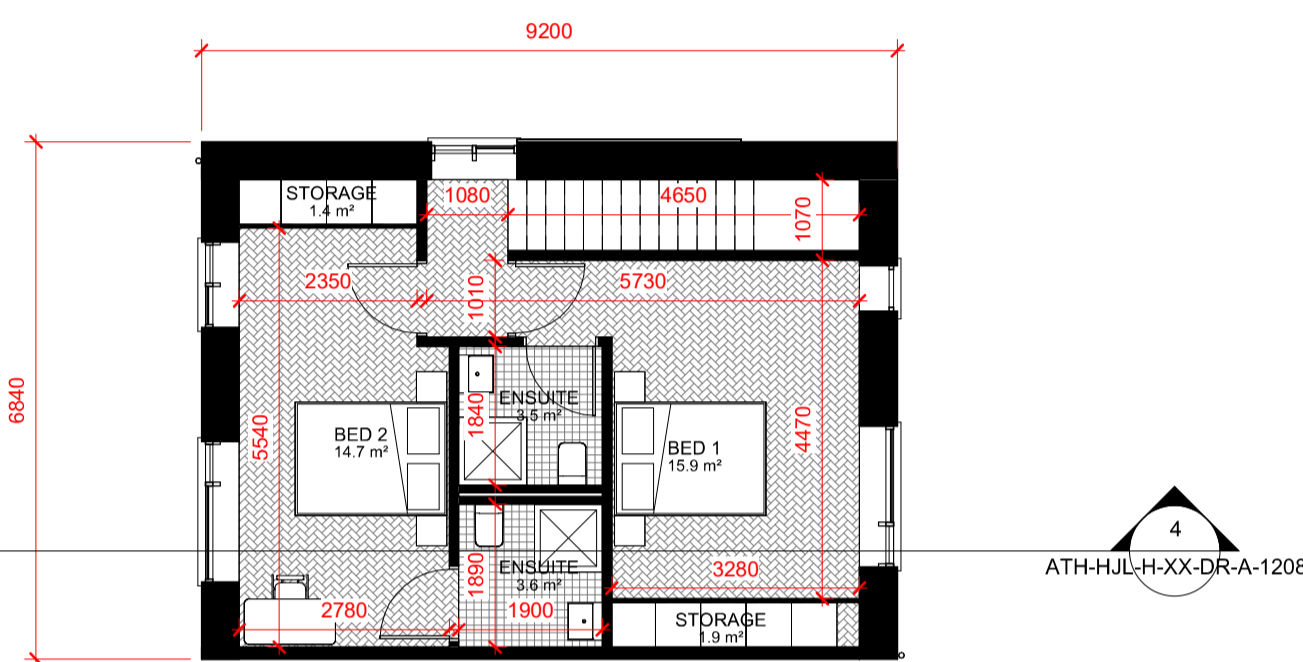
5 FRONT ELEVATION
1:100



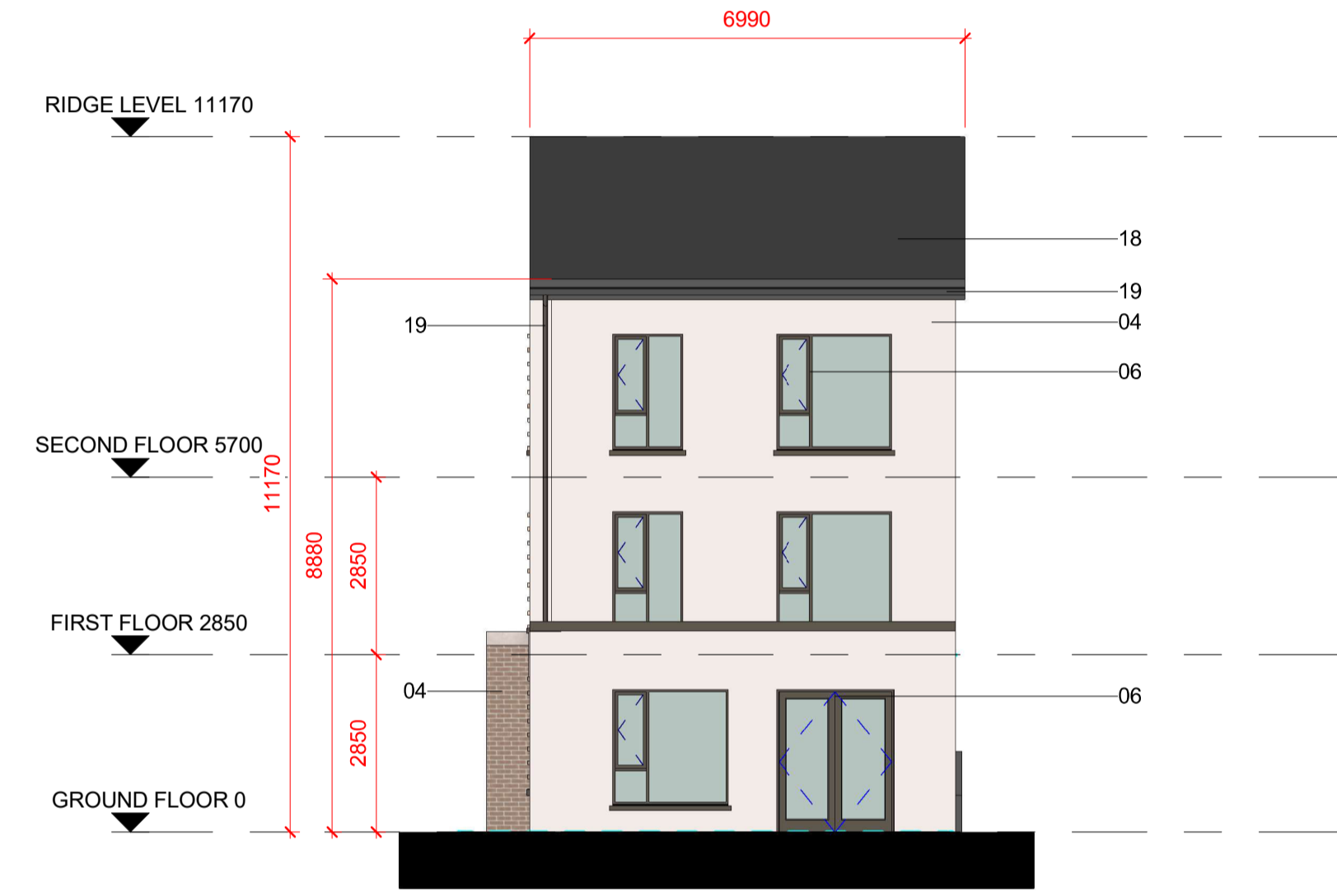
HOUSE TYPE 3B - TOTAL No. : 2

Room Schedule		Area Schedule	
Name	Area	Level	Area
Ground Floor			
KITCHEN / DINING	33.6	Ground Floor	72.5 m ²
LIVING	17.0	First Floor	47.6 m ²
STORAGE	3.6	Second Floor	46.3 m ²
UTILITY	3.0	Total	166.4 m ²
WC	2.8		
First Floor			
BATHROOM	4.7		
BED 3	10.1		
BED 4	10.1		
STORAGE	1.0		
STORAGE	1.0		
STORAGE	0.7		
STUDY	4.7		
Second Floor			
BED 1	15.9		
BED 2	14.7		
ENSUITE	3.6		
ENSUITE	3.5		
STORAGE	1.4		
STORAGE	1.9		

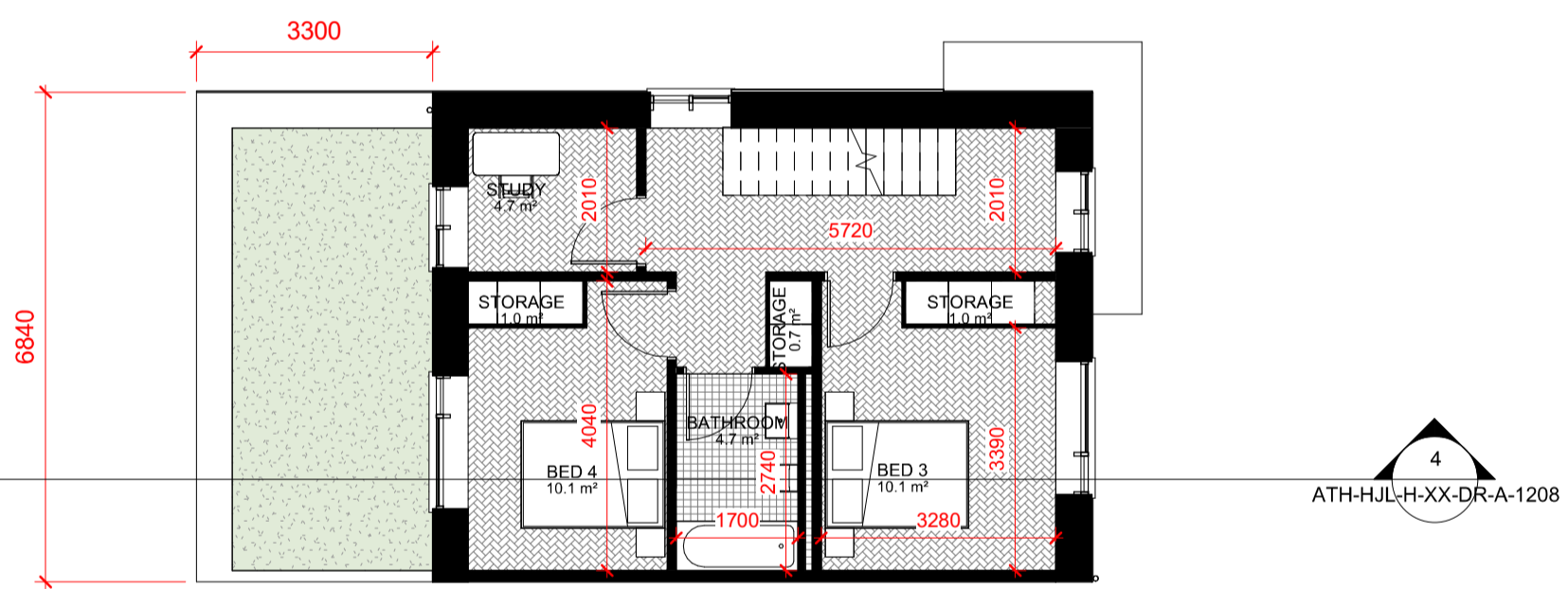
TOTAL FLOOR AREA INCLUDES CIRCULATION



3 SECOND FLOOR
1:100



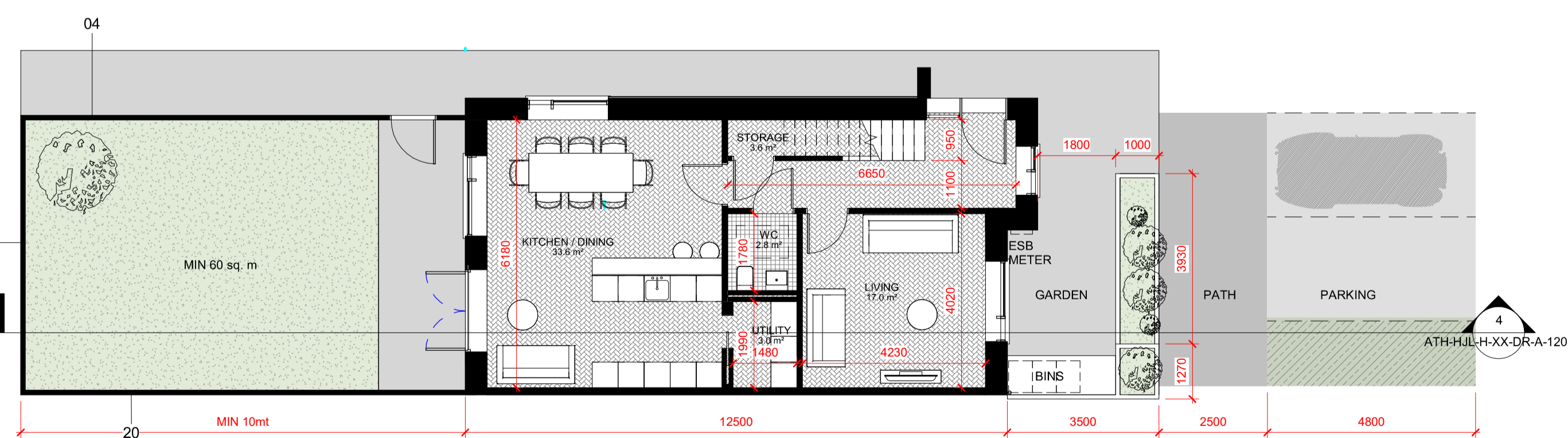
8 REAR ELEVATION
1:100



2 FIRST FLOOR
1:100



6 SIDE ELEVATION
1:100



1 GROUND FLOOR
1:100

MATERIAL LEGEND	
	DESCRIPTION
03	BRICK TYPE 3 TO SELECT FINISH
04	BRICK TYPE 4 TO SELECT FINISH
05	BLOCKWORK WALLS WITH RENDER FINISH
06	PPC ALUMINIUM FRAMED WINDOWS / DOORS TO SELECT FINISH
10	RUSTICATED BRICKWORK (PROJECTING COURSE EVERY 3 COURSES)
12	METAL ACCESS GATE TO SELECT FINISH
18	ROOF TILES TO SELECT FINISH
19	RAINWATER GOODS PVC TO SELECT COLOUR
20	TIMBER FENCE

REV	DATE	DESCRIPTION	RD	YF
P1	10/12/2021	ISSUED FOR PLANNING APPROVAL	RD	YF

STATUS CODE DESCRIPTION
ISSUED FOR PLANNING APPROVAL

CLIENT
Avenir Homes Limited

PROJECT
The Green Quarter

DRAWING
HOUSE TYPE 3B (4 BED 3 STOREY END TERRACE SIDE ENTRANCE)

PROJECT NUMBER	DATE
950659	10/12/2021

SCALE@ A1:	DRAWN/CHECKED:
1:100	YFJ/CM

STATUS CODE:	DRAWING NUMBER	REVISION
A1	ATH-HJL-H-XX-DR-A-1208	P1

Henry J Lyons
Architecture + Interiors
henrylyons.com

+353 1 888 3333
info@henrylyons.com

51-54 Pearse Street
Dublin D02 KA66